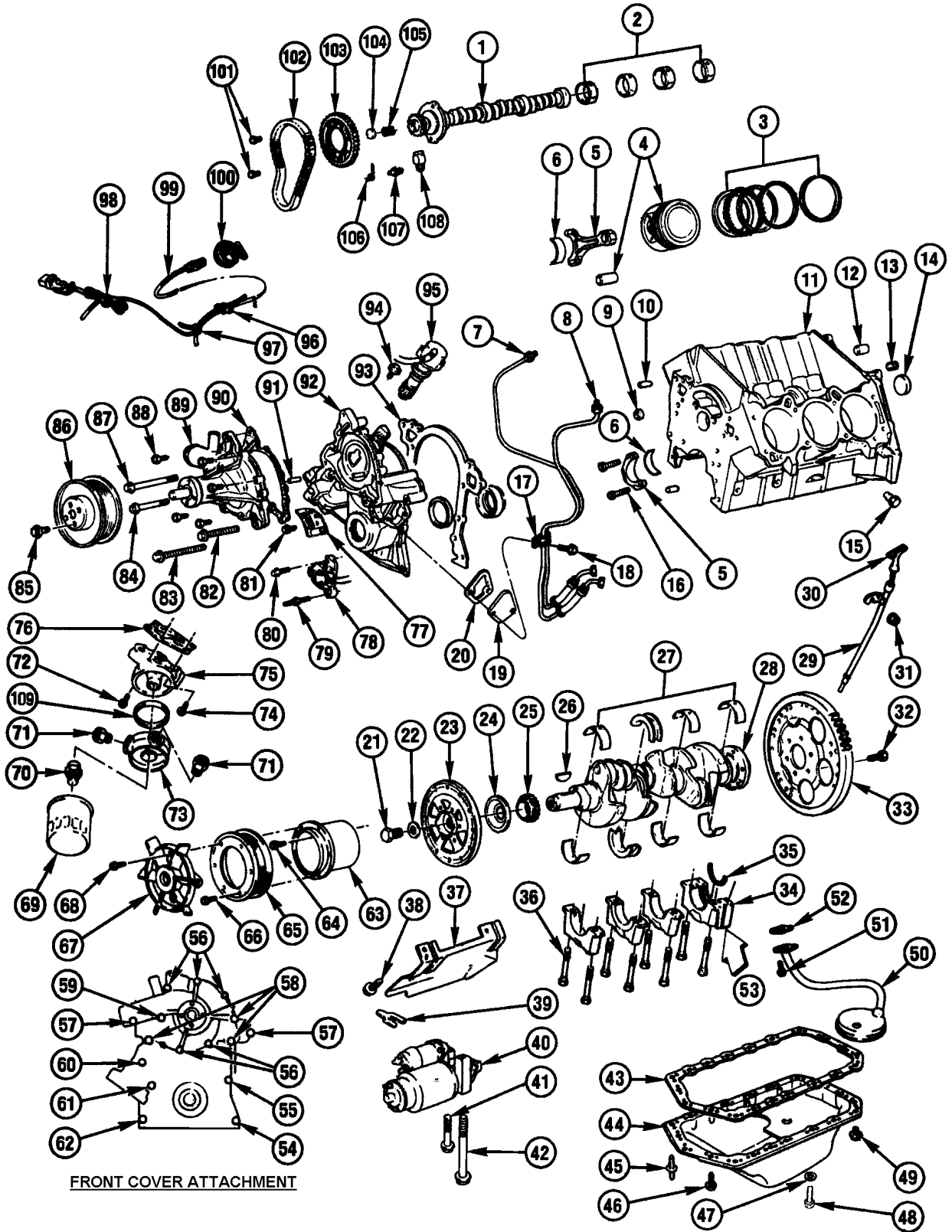


1986-1987 G ENGINE ASM-3.8L V6 PART 1 (LC2/3.8-7) TURBOCHARGED



FRONT COVER ATTACHMENT

1986-1987 G ENGINE ASM-3.8L V6 PART 1 (LC2/3.8-7) TURBOCHARGED

1.	0.519	CAMSHAFT, ENG	25517479
2.	0.539	BEARING , CAMSHAFT (2,3).....	1231142
3.	0.643	RING KIT , PISTON	25527543
4.	0.629	PISTON , W/PIN.....	25527178
5.	0.603	ROD , CONN.....	25506520
6.	0.616	BEARING KIT , CONN ROD	18005399
7.	3.163	PIPE , FUEL RAIL FEED.....	25526146
8.	3.163	PIPE , INJ FUEL RTN	25526145
9.	8.970	PLUG , FRONT OIL GALLEY (37/64 OD)	
10.	8.939	PIN , DOWEL (1/4 X 15/16).....	
11.	0.033	ENGINE , PARTIAL (LESS CAMSHAFT)	25527476
12.	8.939	PIN , DOWEL (5/8 X 1 3/16, PL).....	
13.	8.971	PLUG , HEX SOC DRN (1/4 X 18).....	
14.	0.553	PLUG , CAMSHAFT RR BRG LOC (EXPANSION CUP).....	25521361
15.	8.971	PLUG , (1/8"-27)	
16.	0.623	BOLT , CONN ROD	25531956
17.	3.162	CLIP , PIPE FUEL INJ FEED.....	25525657
18.	0.206	BOLT , ENG FRT COVER	25519891
19.	3.901	COVER , FUEL PUMP OPENING.....	1384207
20.	3.904	GASKET , FUEL PUMP	12337247
21.	0.662	BOLT , 3/16 X 1 3/8 HEX HEAD (8900)(AR)	
22.	0.662	WASHER , BAL TO CR/SHF (1.72 X .781)	25525918
23.	0.659	BALANCER KIT , CR/SHF.....	25523503
24.	0.648	SLINGER , CR/SHF OIL	1193967
25.	0.728	SPROCKET , CR/SHF	25519954
26.	0.662	KEY , BAL TO CR/SHF.....	1352537
27.	0.096	BEARING KIT , CR/SHF (1).....	12332568
28.	0.646	CRANKSHAFT , ENGINE	1260873
29.	1.516	TUBE , OIL LVL IND.....	25525746
30.	1.516	INDICATOR , OIL LEVEL	25525696
31.	8.915	NUT , HEX M8X1.25 X7.8 10 1040MPA PC(0349)(W/CAST IRON HD).....	
32.	8.900	BOLT , 7/16-20 X 45/64, 300M (AR).....	
33.	0.666	FLYWHEEL	25512350
34.	N.S.	CAP , BEARING (PART OF 11).....	
35.	0.137	PACKING , RR MAIN BRG OIL SEAL.....	9772831
36.	0.056	BOLT , CAM SHAFT BRG CAP	25517607
37.	2.104	SHIELD , STARTER SOL	25500331
38.	8.900	BOLT , HEX, 5/16-18X.50 280M PS, .36-THD (AR).....	
39.	2.042	SHIM , STARTER MTR (1X1 7/8X.015).....	1246249
40.	2.041	MOTOR , STARTER (CPS)(*1).....	10455300
41.	2.042	BOLT , START MTR TO BLK (3/8-16X1 7/8 280M).....	14057098
42.	2.042	BOLT , START MTR TO BLK (3/8-16X4 11/16).....	14057099
43.	1.429	GASKET , OIL PAN	25521994
44.	1.426	PAN , OIL.....	25536865
45.	1.428	STUD , OIL PAN TO BLK	25520241
46.	1.428	BOLT, OIL PAN (1/4-20 X .87).....	25520079
47.	1.456	GASKET , OIL PAN DRN PLUG.....	25524544
48.	8.971	PLUG , OIL PAN DRAIN (1/2-20 X 7/8)(AR)	
49.	8.900	BOLT , HFH 5/16-18 X .75 280M POR .50 OD FULL THD (AR)	25524524
50.	1.657	HOUSING , W/OIL PIPE & SCREEN.....	25505644
51.	8.900	BOLT, HEX HD 1/20 X .50 CAD OR ZC (AR)	
52.	1.657	GASKET , O/PUMP SUCTION SIDE PIPE FLANGE	25518470
53.	8.800	SEALER, SILICON (RTV T-200).....	
54.	0.206	BOLT, W/WA ENG FRT COVER	25525490
55.	0.206	BOLT, ENG FRT COVER (5/16-18 X 1 27/64 300M).....	25519262
56.	1.073	BOLT, W/WA, CLNT PUMP CVR TO ENG FRT COVER.....	25524007
57.	0.206	BOLT, FRT CVR W/WA (5/16-18 X 2.0 300M).....	25515641
58.	1.073	BOLT, CLNT PUMP W/WA (5/16-18 X 4.38).....	25515639
59.	1.073	BOLT, CLNT PUMP CVR TO BLK	25519889
60.	0.206	BOLT, W/WA, ENG FRT CVR (5/16-18 X .94).....	25519892
61.	0.206	BOLT, ENG FRT CVR(5/16-18 X .80 300M).....	25519891
62.	0.206	STUD , W/WA (HEX W/22 OD WA, 5/16-18X24.4, 8X1.25X25,9.8,PX.....	25525489
63.	0.659	HUB , CR/SHF PUL (1986)	25525499
64.	8.900	BOLT , HFH 5/16-18 X 1.00, 0.861 THD, 0.65 OD, 300M,PC (AR).....	
65.	0.659	PULLEY , CR/SHF.....	25525204
66.	8.900	BOLT , HFH M8 X 1.25 X 16 17.6-OD 9.8 PZOR (AR).....	
67.	3.373	FAN , TURBO BOOST AIR INTCLR	25526398
68.	8.900	BOLT , HFH M8 X 1.25 X 16 17.6-OD 9.8 PZOR (AR).....	
69.	1.836	FILTER , OIL (PF 47 OR PF 52).....	25010792
70.	1.540	CONNECTOR , OIL COOLER ADAPTER	25525282
71.	1.540	FITTING , OIL COOLER LINES.....	25525500
72.	1.652	BOLT , O/PUMP CVR (1/4-20 X 1.12).....	25518361
73.	1.540	ADAPTER , OIL COOLER.....	25530885

1986-1987 G ENGINE ASM-3.8L V6 PART 1 (LC2/3.8-7) TURBOCHARGED

74.	1.657	BOLT , O/PUMP CVR (1/4-20 X 1.50 275M)(8.900).....	9428180
75.	1.723	COVER , W/VLV, O/PUMP.....	966638
76.	1.724	GASKET , O/PUMP COVER.....	25512860
77.	0.219	ADAPTER , MAGNETIC PICK-UP	1264952
78.	2.383	SENSOR , CR/SHF POSN.....	25535480
79.	0.206	STUD , W/WA ENG FRT COVER	25525490
80.	0.206	BOLT , ENG FRT COVER.....	25519262
81.	8.977	SCREW , TAP (1/4-14 X 3/4).....	
82.	0.206	BOLT , FRT COVER W/WA (5/16-18 X 2.0 300M)	25515641
83.	1.073	BOLT , CLNT PUMP W/WA (5/16-18 X 4.38).....	25515639
84.	0.206	BOLT , W/WA, ENG FRT COVER (5/16-18 X .94)	25519892
85.	8.900	BOLT , HFH, 5/16-24 X .50, 300M, .40 THD, .65-OD (AR).....	
86.	1.062	PULLEY , COOLANT PUMP	25525498
87.	1.073	BOLT , CLNT PUMP CVR TO BLK.....	25519889
88.	1.073	BOLT , W/WA, CLNT PUMP COVER TO ENG FRT CVR.....	25524007
89.	1.069	PUMP , W/GSKT CLNT (INCL ITEM 90).....	25527536
90.	1.079	GASKET , CLNT PUMP CVR (ALSO PART OF 89).....	1358410
91.	8.939	PIN , DOWEL 1/4 X 1/2 (AR).....	
92.	0.206	COVER , ENGINE FRONT.....	25522648
	N.S.	GASKET KIT , ENGINE FRONT COVER (INCL ITEM 93)	
93.	0.207	GASKET , ENG FRONT CVR (ALSO PART OF 92)	25519994
94.	2.363	BOLT , W/WA, DISTR HOLD DOWN.....	25526454
95.	2.383	SENSOR , W/DRIVE, CM/SHF	25516915
96.	2.343	RETAINER , BAT CABLE TO FRM (2251).....	25502090
97.	8.965	STRAP , PLASTIC 7" ADJUSTABLE RETAINER (AR)	
98.	8.965	STRAP , ADJ TIE, 5.00 MM WIDE, 345MM WORKING LGTH, BLK NYL (AR).....	
99.	1.152	CORD , ENG BLK HEATER (1986).....	25529223
	1.152	CORD , ENG BLK HEATER (1987).....	52353026
100.	1.152	HEATER , ENG BLK	25537080
101.	0.738	BOLT , W/WA, CM/SHF SPKT TO CM/SHF	25532736
102.	0.724	CHAIN , TIMING.....	1257408
103.	0.736	SPROCKET , CM/SHF	25523115
104.	0.533	BUTTON , CM/SHF THR	1250948
105.	0.533	SPRING , THR BUTTON.....	1254199
106.	0.724	SPRING , TIMING CHAIN DMP	1358909
107.	0.724	BOLT , TIMING CHAIN DMP TO BLK	1356635
108.	0.724	DAMPENER , TIMING CHAIN.....	25532546
109.	1.540	SEAL , O RING BY PASS (TURBO W/INTERCOOLER).....	25530999

NOTE 1: SEE RESPECTIVE GROUP FOR DETAILED ILLUSTRATED VIEW